

# DermaTx™

ADVANCED SKINCARE



## Directions:

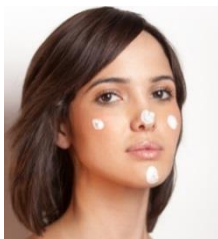
### **Microdermabrasion treatment:**

Cleanse the face manually only, rinse and pat dry. (Do not cleanse with the brush attachment before a microdermabrasion procedure.)



Attach the foam applicator to the Cleanse and Exfoliate 2-in-1 tool

Apply cream to the foam applicator and dot onto clean, damp skin (forehead, cheeks, chin, nose).



Turn on the device and using circular motions, massage the cream into the skin with the foam applicator for approximately 2 minutes. Work around your face from one area to another.

Do not use around the eye area, and avoid getting any cream in your eyes.

Rinse off the remaining crystal residue with warm water.

Dry face and apply a moisturiser.

Clean the foam applicator immediately after use with hot water and anti-bacterial soap and allow to dry thoroughly before next use.

Perform treatments 1-2 times a week or as required for optimal results and overall improvement of skin tone and texture.

### **Daily cleansing with Cleanse and Exfoliate 2-in-1 tool:**



We suggest you use the Cleansing Brush once daily.

Remove make-up before use.

Attach the brush head to the Cleanse and Exfoliate 2-in-1 tool

Apply cleanser to moistened skin or brush head.

Turn on the device and gently apply the brush to your skin. No need to apply pressure.

Begin with your forehead and gently move it using a small circular motion around the face for 2 minutes.

Avoid the eye area.

Rinse, pat dry and follow with a moisturiser.

Wash brush head after each use with anti-bacterial soap.

The Cleanse and Exfoliate 2-in-1 device is great not only for your facial cleansing routine, but also for using on areas on your body like arms, hands & chest.

The brush and foam applicator should be replaced every 3 months.